

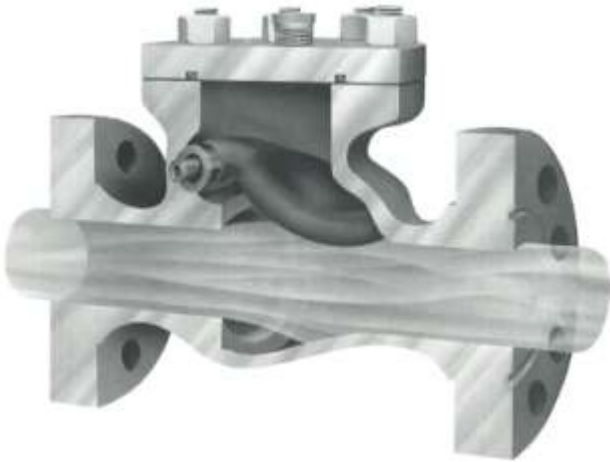
API 6D Carbon Steel Flanged End
Check Valves 1 in. through 6 in.
ASME/ANSI Classes 150 through 2500



WHEATLEY®

API 6D CARBON STEEL FLANGED END CHECK VALVES WHEN YOU NEED A CHECK VALVE THAT HAS TO WORK

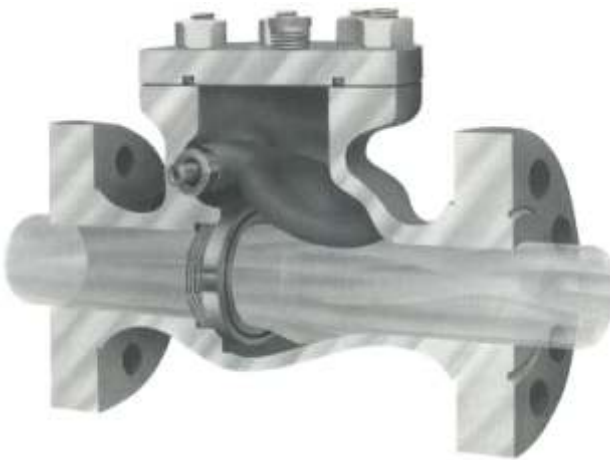
Non-Removable (Integral) Seat



Bill of Materials Non-Removable (Integral) Seat

Name of Part	Material
Body	Steel ASTM A216 Grade WCC
Clapper/Seat Seal	90 Durometer Peroxide Cured Buna-N or FKM
Cover	Steel ASTM A36/A516 Grade 70
Cover Seal	90 Durometer Peroxide Cured Buna-N or FKM
Cover Stud	Steel ASTM A193 Grade B7
Cover Nut	Steel ASTM A194 Grade 2H
Bleeder Plug	Steel
Clapper/Arm	316 Stainless Steel
Clapper Pin Shaft	316 Stainless Steel
Pin Plug	Steel
Name Plate	Stainless Steel

Removable Seat



Bill of Materials Removable Seat

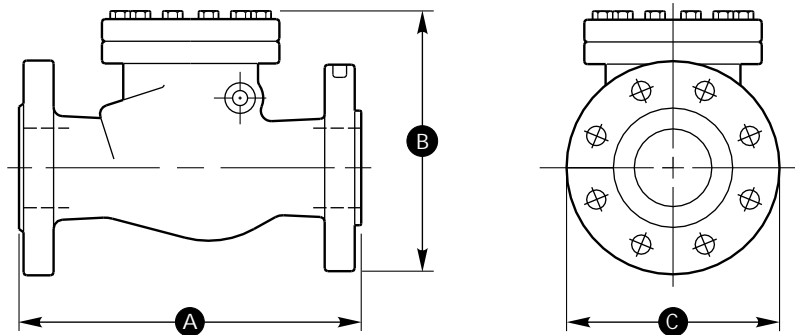
Name of Part	Material
Body	Steel ASTM A216 Grade WCC
Removable Seat	316 Stainless Steel
Body/Seat Ring Seal	90 Durometer Peroxide Cured Buna-N or FKM
Seat Ring/Clapper Seal	90 Durometer Peroxide Cured Buna-N or FKM
Cover	Steel ASTM A36/A516 Grade 70
Cover Seal	90 Durometer Peroxide Cured Buna-N or FKM
Cover Stud	Steel ASTM A193 Grade B7
Cover Nut	Steel ASTM A194 Grade 2H
Bleeder Plug	Steel
Clapper/Arm	316 Stainless Steel
Clapper Pin Shaft	316 Stainless Steel
Pin Plug	Steel
Name Plate	Stainless Steel

When you've been in business for 80 years you come to know a thing or two about what your customers are looking for. That's why we've built everything you need right into our off-the-shelf API 6D check valves. And, we've done it for price that's pretty close to what other manufacturers charge you for their "standard".

Deluxe Features:

- 316 stainless steel trim is compatible with a broad range of media and operating conditions
- Full-open, through conduit design for low pressure drop and less turbulence. Valves easily pass pigs and spheres
- 90 durometer, peroxide-cured seals are compatible with a broad range of media and operating conditions. Seals provide a bubble-tight shut-off every time
- Suitable for vertical flow up or horizontal installation. Eliminates guesswork on your part
- All materials conform to NACE MR0175 (2002)
- Cast on flanges provide greater valve body integrity and fewer leak points
- API 6D monogram
- Flanges are back-faced - an extra manufacturing step which provides smoother bolting surfaces and even bolt loading
- Bolted top entry complete with 1/2 in. NPT cover tap for gauges and accessories (except 1 in. size)
- In-line repairable
- Thru-pin clapper shaft makes clapper removal easier and extends valve life by transferring wear and tear to an inexpensive replaceable part.

API 6D CARBON STEEL FLANGED END CHECK VALVES RAISED FACE OR RING TYPE JOINT FLANGED BOLTED COVER



Valve Size in.	ASME Class	Working Pressure	A (in.)		B (in.)	C (in.)	Weight (lbs.)	Order Number Non-Removable Seat	Order Number Removable Seat
			RF	RTJ					
1	150	275	7 3/4	8 1/4	3 5/16	4 1/4	15	9D-910-01*027-121	9D-911-01*027-121
	300	720	8	8 1/2	3 5/16	4 7/8	15	9D-910-01*072-121	9D-911-01*072-121
	600	1440	8 1/2	8 1/2	3 5/16	4 7/8	17	9D-910-01*144-121	9D-911-01*144-121
	900	2160	10	10	3 13/16	5 7/8	17	9D-910-01*216-121	9D-911-01*216-121
	1500	3600	10	10	3 13/16	5 7/8	20	9D-910-01*360-121	9D-911-01*360-121
2	150	275	8	8 1/2	7 3/16	6	33	9D-910-02*027-121	9D-911-02*027-121
	300	720	10 1/2	11 1/8	7 7/16	6 1/2	26	9D-910-01*072-121	9D-911-02*072-121
	600	1440	11 1/2	11 5/8	9 1/4	6 1/2	44	9D-910-02*144-121	9D-911-02*144-121
	900	2160	14 1/2	14 5/8	10 1/2	8 1/2	70	9D-910-02*216-121	9D-911-02*216-121
	1500	3600	14 1/2	14 5/8	10 1/8	8 1/2	89	9D-910-02*360-121	9D-911-02*360-121
2500	6000	17 3/4	17 7/8	10 1/2	9 1/4	149	9D-910-02*600-121	9D-911-02*600-121	
3	150	275	9 1/2	10	10 1/4	7 1/2	48	9D-910-03*027-121	9D-911-03*027-121
	300	720	12 1/2	13 1/8	10 15/16	8 1/4	72	9D-910-03*072-121	9D-911-03*072-121
	600	1440	14	14 1/8	11 3/8	8 1/4	76	9D-910-03*144-121	9D-911-03*144-121
	900	2160	15	15 1/8	11 3/4	9 1/2	105	9D-910-03*216-121	9D-911-03*216-121
	1500	3600	18 1/2	18 5/8	15 5/8	10 1/2	220	9D-910-03*360-121	9D-911-03*360-121
2500	6000	22 3/4	23	13 7/8	12	365	9D-700-03*600-121	9D-701-03*600-121	
4	150	275	11 1/2	12	11 15/16	9	75	9D-910-04*027-121	9D-911-04*027-121
	300	720	14	14 5/8	12 3/4	10	101	9D-910-04*072-121	9D-911-04*072-121
	600	1440	17	17 1/8	13 5/8	10 3/4	145	9D-910-04*144-121	9D-911-04*144-121
	900	2160	18	18 1/8	13 7/8	11 1/2	210	9D-910-04*216-121	9D-911-04*216-121
	1500	3600	21 1/2	21 5/8	16 3/8	12 1/4	351	9D-910-04*360-121	9D-911-04*360-121
2500	6000	26 1/2	26 7/8	19 5/8	14	583	9D-700-04*600-121	9D-701-04*600-121	
6	150	275	14	14 1/2	13 11/16	11	110	9D-910-06*027-121	9D-911-06*027-121
	300	720	17 1/2	18 1/8	15 1/4	12 1/2	185	9D-910-06*072-121	9D-911-06*072-121
	600	1440	22	22 1/8	17 1/4	14	300	9D-910-06*144-121	9D-911-06*144-121
	900	2160	24	24 1/8	18 3/4	15	437	9D-910-06*216-121	9D-911-06*216-121
	1500	3600	27 3/4	28	20 5/8	15 1/2	766	9D-910-06*360-121	9D-911-06*360-121
2500	6000	36	36 1/2	25 1/4	19	1368	9D-910-06*600-121	9D-911-06*600-121	

* For ring type joint (RTJ) flanges, use the number 4 as the third digit of the middle set of numbers.
For raised face (RF) flanges, use the number 5 as the third digit of the middle set of numbers.
For FKM seal change suffix to 122.

Note: Dimensions are for estimating purposes only. For critical applications, please contact factory for certified drawings.



If the NACE Plus™ is more than you need, consider the Wheatley Classic™.
Instead of stainless steel, you get carbon steel. Just change the last digits of the order number to -101.

Please contact Cameron, Valves & Measurement for current Terms and Conditions and Trademark information.

**VALVES & MEASUREMENT**

3250 Briarpark Drive, Suite 300
Houston, Texas 77042
USA Toll Free 800 323 9160

For the most current contact and location information go to: www.c-a-m.com