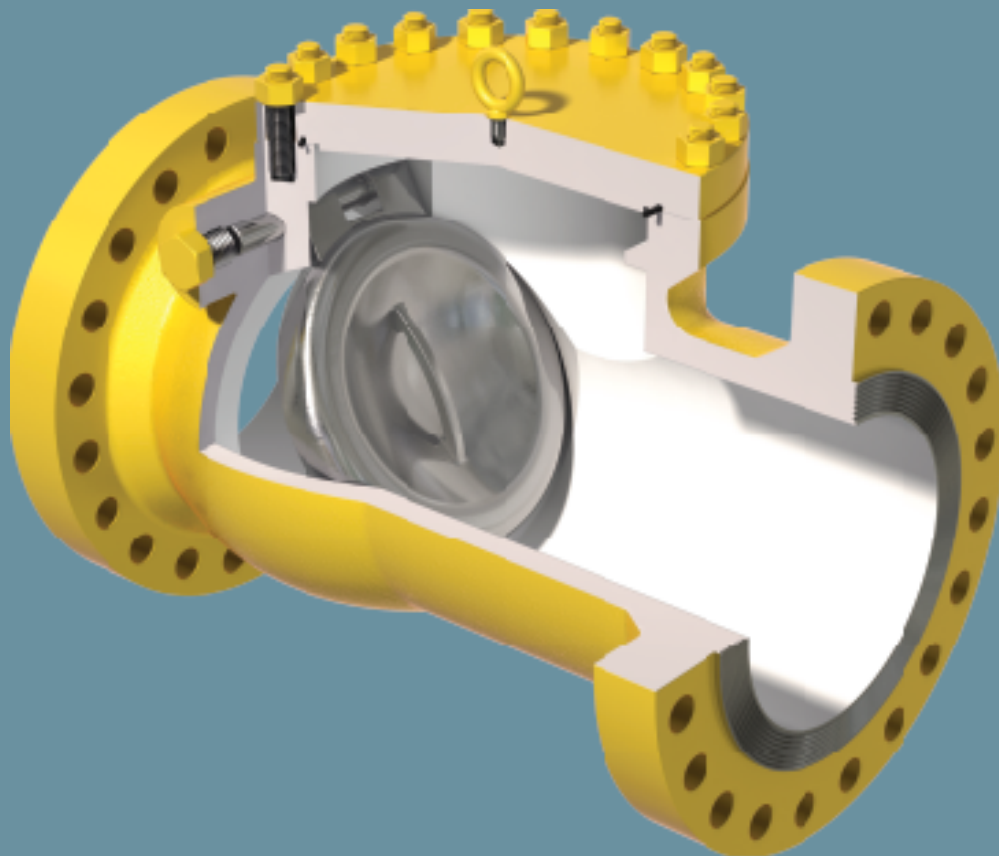


# API 6D Carbon Steel Flanged End Check Valves 8 in. through 12 in. ASME/ANSI Classes 150 through 900



- Full Opening Through Conduit
- 316 Stainless Steel Trim - Standard
- Stellite Trim Optional
- API 6D Monogram
- NACE MR0175 (2002)
- 90 Durometer Peroxide Cured Buna-N or FKM
- Bolted Top Entry 1/2 inch NPT Cover Tap
- Cast On Flanges Fully Machined

**WHEATLEY®**

## API 6D CARBON STEEL FLANGED END CHECK VALVES

### RAISED FACE OR RING TYPE JOINT FLANGE BOLTED COVER

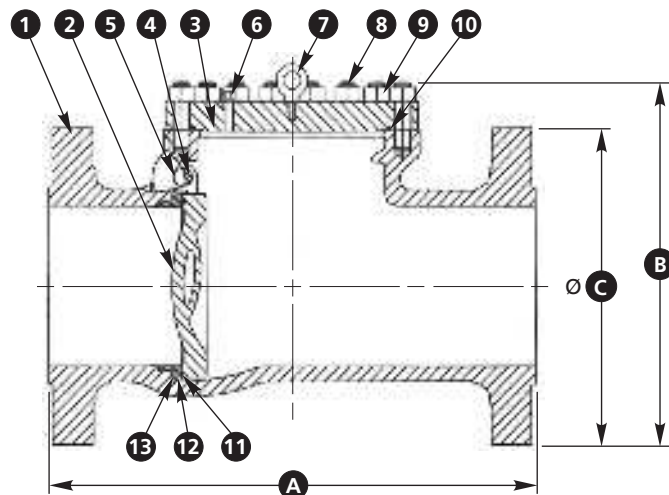
Valve Size	ASME Class	Working Pressure	A (in.)		B (in.)	C (in.)	Weight (lbs.)	Seal	Order Number	
			RF	RTJ					Integral Seat	Removable Seat
8 in.	150	285	19.50	20.00	16.40	13.50	305	PC Buna-N	9D-723-08*028-121	9D-724-08*028-121
								FKM	9D-723-08*028-122	9D-724-08*028-122
	300	740	21.00	21.63	17.40	15.00	405	PC Buna-N	9D-723-08*074-121	9D-724-08*074-121
								FKM	9D-723-08*074-122	9D-724-08*074-122
	600	1480	26.00	26.13	18.30	16.50	560	PC Buna-N	9D-723-08*148-121	9D-724-08*148-121
								FKM	9D-723-08*148-122	9D-724-08*148-122
	900	2220	29.00	29.13	20.10	18.50	825	PC Buna-N	9D-723-08*222-121	9D-724-08*222-121
								FKM	9D-723-08*222-122	9D-724-08*222-122
10 in.	150	285	24.50	25.00	19.40	16.00	500	PC Buna-N	9D-723-10*028-121	9D-724-10*028-121
								FKM	9D-723-10*028-122	9D-724-10*028-122
	300	740	24.50	25.13	20.30	17.50	630	PC Buna-N	9D-723-10*074-121	9D-724-10*074-121
								FKM	9D-723-10*074-122	9D-724-10*074-122
	600	1480	31.00	31.13	22.20	20.00	990	PC Buna-N	9D-723-10*148-121	9D-724-10*148-121
								FKM	9D-723-10*148-122	9D-724-10*148-122
	900	2220	33.00	33.13	23.40	21.50	1260	PC Buna-N	9D-723-10*222-121	9D-724-10*222-121
								FKM	9D-723-10*222-122	9D-724-10*222-122
12 in.	150	285	27.50	28.00	23.00	19.00	810	PC Buna-N	9D-723-12*028-121	9D-724-12*028-121
								FKM	9D-723-12*028-122	9D-724-12*028-122
	300	740	28.00	28.63	23.70	20.50	970	PC Buna-N	9D-723-12*074-121	9D-724-12*074-121
								FKM	9D-723-12*074-122	9D-724-12*074-122
	600	1480	33.00	33.13	25.00	22.00	1305	PC Buna-N	9D-723-12*148-121	9D-724-12*148-121
								FKM	9D-723-12*148-122	9D-724-12*148-122
	900	2220	38.00	38.13	26.80	24.00	1775	PC Buna-N	9D-723-12*222-121	9D-724-12*222-121
								FKM	9D-723-12*222-122	9D-724-12*222-122

\* For ring type joint (RTJ) flanges, use the number 4 as the third digit of the middle set of numbers.

For raised face (RF) flanges, use the number 5 as the third digit of the middle set of numbers.

Note: Dimensions are for estimating purposes only. For critical applications, please contact factory for certified drawings.

Item #	Description	Material
1	Body	ASTM A216 WCC
2	Clapper/Arm	ASTM A351 CF8M or ASTM A487-CA15
3	Cover	ASTM A36
4	Shaft	ASTM A276 UNS S31600
5	Stem Hex Plug	ASTM A105
6	Cover Hex Plug	ASTM A105
7	Eye Bolt	Carbon Steel
8	Studs	ASTM A193 B7
9	Nuts	ASTM A194 2H
10	Cover Seal	PC Buna-N or FKM
11	Clapper Seal	PC Buna-N or FKM
12**	Removable Seat	316 or 410 ST. ST.
13**	Seat Seal	PC Buna-N or FKM



WHEATLEY®

\*\* Only for valves with removable seat.

Note: 410 SS trim available upon request.

For other materials, please consult factory.



Please contact Cameron, Valves & Measurement for current Terms and Conditions and Trademark information.



VALVES & MEASUREMENT  
3250 Briarpark Drive, Suite 300  
Houston, Texas 77042  
USA Toll Free 800 323 9160

For the most current contact and location information go to: [www.c-a-m.com/valvesandmeasurement](http://www.c-a-m.com/valvesandmeasurement)