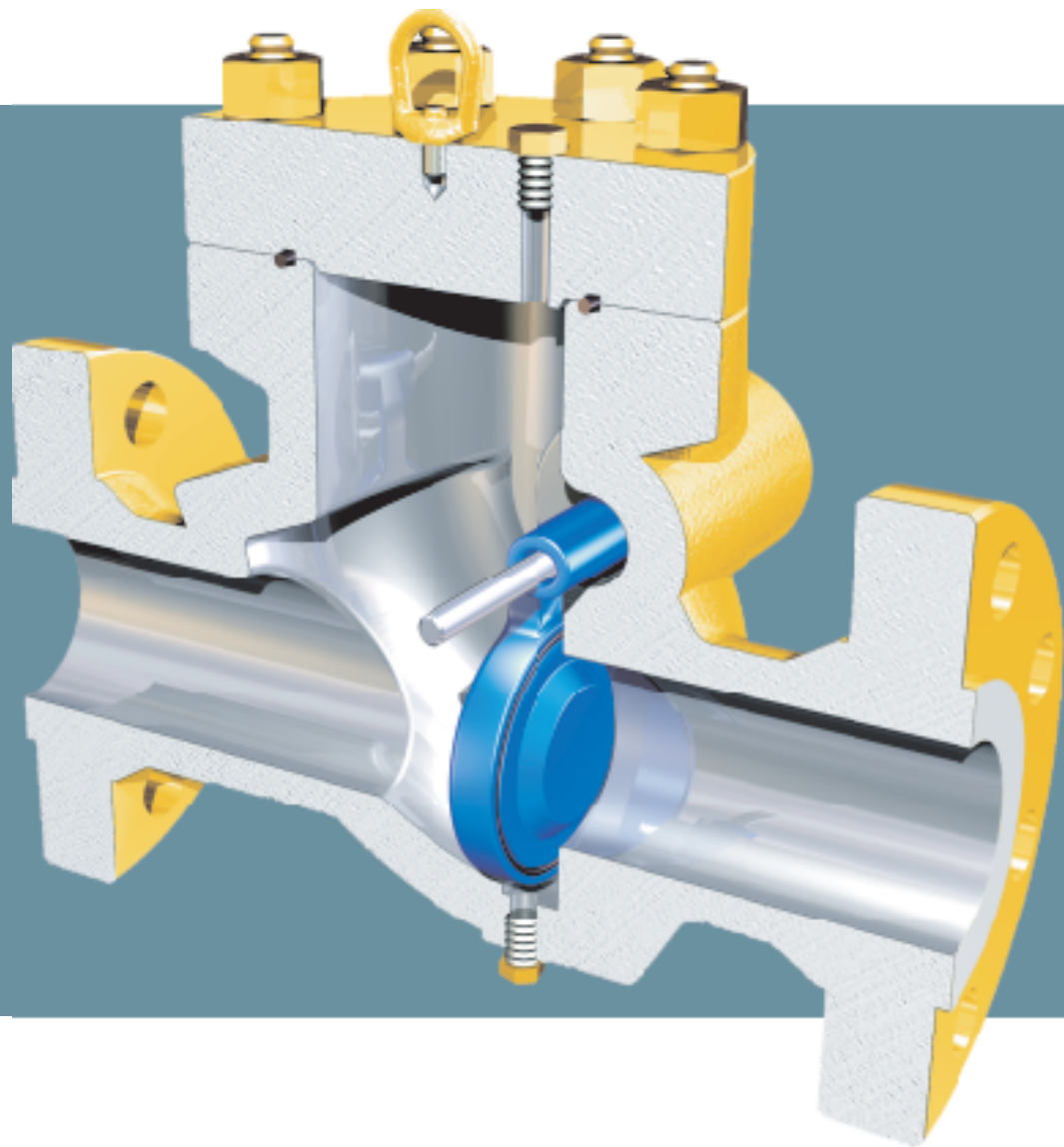


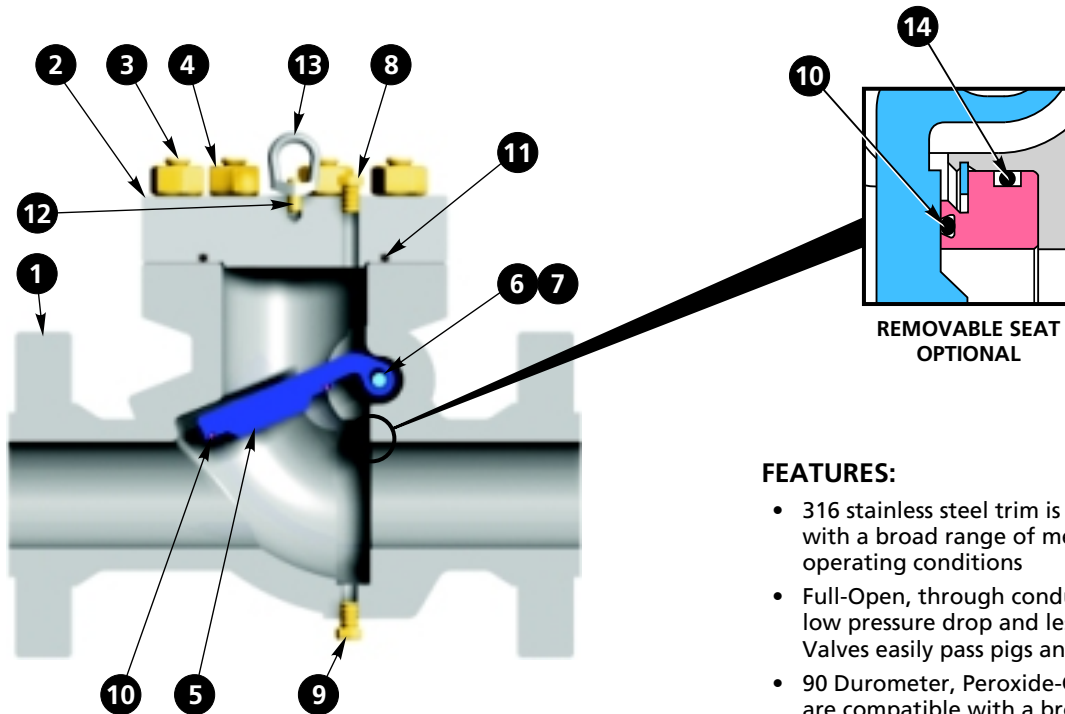
WHEATLEY[®] Series 500 Fire Tested Carbon Steel Flanged End Check Valves 1 in. (25 mm) through 12 in. (300 mm)



WHEATLEY[®]

API 6D/DRILLING PRODUCTION VALVE CARBON STEEL FLANGED END CHECK VALVES WHEN YOU NEED A CHECK VALVE THAT HAS TO WORK

NON-REMOVABLE (INTEGRAL) SEAT



FEATURES:

- 316 stainless steel trim is compatible with a broad range of media and operating conditions
- Full-Open, through conduit design for low pressure drop and less turbulence. Valves easily pass pigs and spheres
- 90 Durometer, Peroxide-Cured Seals are compatible with a broad range of media and operating conditions. Seals provide a Bubble-Tight Shut-Off every time
- Suitable for vertical flow up or horizontal installation. Eliminates installation guesswork
- All materials conform to NACE MR0175 (2002)
- Cast on Flanges provide greater valve body integrity and fewer leak points
- API 6D Monogram (510/511 Only)
- Designed in accordance with ASME B16.34 (510/511 Only)
- Valve is Fire Tested to API 6FD requirements (except for 1 in. (25 mm) valve)
- CANADIAN REGISTRATION NUMBER (CRN) Available upon Request
- Flanges are Back-Faced - an extra manufacturing step which provides smoother bolting surfaces and even bolt loading
- Bolted Top Entry complete with 1/2 in. NPT Cover Tap for gauges and accessories (except 1 in. (25 mm) size)
- In-line repairable
- Thru-Pin Clapper Shaft makes clapper removal easier and extends valve life by transferring wear and tear to an inexpensive replaceable part.

MATERIALS LIST

ITEM	PART	STANDARD TRIM API 6D -20°F to 250°F (-29°C to 121°C)	STANDARD TRIM DPV -20°F to 400°F (-29°C to 204°C)
1	Body	ASTM A216 Gr. WCC	ASTM A487-4C
2	Cover	ASTM A216 Gr. WCC	ASTM A487-4C
3	Studs	ASTM A193 Gr. B7	ASTM A193 Gr. B7
4	Nuts	ASTM A194 Gr. 2H	ASTM A194 Gr. 2H
5	Clapper	ASTM A351 Gr. CF8M	ASTM A351 Gr. CF8M
6	Clapper Pin	ASTM A479 Gr. 316 SS	ASTM A479 Gr. 316 SS
7	Pin Plug	ASTM A105	ASTM A105
8	Vent Plug	ASTM A105	ASTM A105
*	9 Drain Plug	ASTM A105	ASTM A105
10	Clapper/Seat O-Ring	Peroxide Cured Buna	FKM
11	Cover O-Ring	Peroxide Cured Buna	FKM
**12	Stud	ASTM A193 B7M	ASTM A193 B7M
**13	Eyebolt	Forged Steel	Forged Steel
14	Removable Seat O-Ring	Peroxide Cured Buna	FKM

* Use on 4 in. (100 DN) and larger.

** Item 12 and 13 are only available on bore size 4 in. (100 DN) ASME Class 900 and larger. We reserve the right to change materials and specifications.

API 6D/DRILLING PRODUCTION VALVE CARBON STEEL FLANGED END CHECK VALVES RAISED FACE OR RING TYPE JOINT FLANGED BOLTED COVER

ASME CLASS AND DIMENSIONS

Valve Size in. (DN)	ASME Class	Working Pressure (PN)	in. (mm)				Weight lbs. (kg)
			RF	A	RTJ	B	
1 (25)	150	275 (20)	7.75 (197)	8.25 (210)	3.31 (84)	4.25 (108)	15 (6.5)
	300	720 (50)	8 (203)	8.5 (216)	3.31 (84)	4.88 (124)	15 (6.5)
	600	1440 (100)	8.5 (216)	8.5 (216)	3.31 (84)	4.88 (124)	17 (7.5)
	900	2160 (150)	10 (254)	10 (254)	3.81 (97)	5.88 (149)	17 (7.5)
	1500	3600 (250)	10 (254)	10 (254)	3.81 (97)	5.88 (149)	20 (9)
2 (50)	150	275 (20)	8 (203)	8.5 (216)	8.38 (213)	6 (152)	32 (14)
	300	720 (50)	10.5 (267)	11.13 (283)	8.88 (226)	6.5 (165)	45 (20)
	600	1440 (100)	11.5 (292)	11.63 (296)	9.31 (236)	6.5 (165)	60 (27)
	900	2160 (150)	14.5 (371)	14.63 (372)	11.45 (291)	8.5 (216)	102 (46)
	1500	3600 (250)	14.5 (371)	14.63 (372)	11.45 (291)	8.5 (216)	102 (46)
	-	5000 (250)	14.5 (371)	14.63 (372)	11.45 (291)	8.5 (216)	102 (46)
3 (80)	150	275 (20)	9.5 (241)	10 (254)	10.64 (270)	7.5 (190)	60 (27)
	300	720 (50)	12.5 (318)	13.13 (334)	11.4 (290)	8.25 (210)	92 (42)
	600	1440 (100)	14 (356)	14.13 (359)	11.83 (300)	8.25 (210)	105 (47)
	900	2160 (150)	15 (381)	15.13 (384)	12.65 (384)	9.5 (241)	144 (65)
	1500	3600 (250)	18.5 (470)	18.63 (473)	15.47 (393)	10.5 (267)	244 (110)
	-	5000 (250)	18.5 (470)	18.63 (473)	15.47 (393)	10.5 (267)	244 (110)
4 (100)	150	275 (20)	11.5 (292)	12 (305)	12.25 (311)	9 (229)	95 (43)
	300	720 (50)	14 (356)	14.63 (372)	13.18 (335)	10 (254)	138 (62)
	600	1440 (100)	17 (432)	17.13 (435)	14.03 (356)	10.75 (273)	192 (87)
	900	2160 (150)	18 (457)	18.13 (461)	16.75 (425)	11.5 (292)	248 (112)
	1500	3600 (250)	21.5 (546)	21.63 (550)	19.73 (501)	12.25 (311)	447 (203)
	-	5000 (250)	21.5 (546)	21.63 (550)	19.73 (501)	12.25 (311)	447 (203)
6 (150)	150	275 (20)	14 (356)	14.5 (368)	16.5 (419)	11 (279)	166 (75)
	300	720 (50)	17.5 (445)	18.13 (461)	16.65 (423)	12.5 (318)	264 (119)
	600	1440 (100)	22 (559)	22.13 (562)	19 (483)	14 (356)	368 (167)
	900	2160 (150)	24 (610)	24.13 (613)	23.2 (589)	15 (381)	568 (257)
	1500	3600 (250)	27.75 (711)	28 (712)	23.35 (593)	15.5 (394)	760 (344)
8 (200)	150	275 (20)	19.5 (495)	20 (508)	20.35 (517)	13.5 (343)	359 (162)
	300	720 (50)	21 (533)	21.63 (550)	22.6 (574)	15 (381)	471 (213)
	600	1440 (100)	26 (660)	26.13 (664)	26.13 (664)	16.5 (419)	642 (291)
	900	2160 (150)	29 (737)	29.13 (740)	20.1 (511)	18.5 (470)	825 (374)
10 (250)	150	275 (20)	24.5 (622)	25 (635)	23.5 (597)	16 (406)	492 (223)
	300	720 (50)	24.5 (622)	25.13 (639)	24.95 (634)	17.5 (445)	660 (299)
	600	1440 (100)	31 (787)	31.13 (791)	28.2 (716)	20 (508)	1052 (477)
	900	2160 (150)	33 (839)	33.13 (842)	23.4 (595)	21.5 (546)	1260 (571)
12 (300)	150	275 (20)	27.5 (699)	28 (712)	26.3 (668)	19 (483)	656 (297)
	300	720 (50)	28 (711)	28.63 (728)	27.95 (710)	20.5 (521)	945 (428)
	600	1440 (100)	33 (838)	33.13 (842)	30.9 (785)	22 (559)	1405 (637)
	900	2160 (150)	38 (966)	38.13 (969)	26.8 (681)	24 (610)	1775 (805)

Note: Dimensions are for estimating purposes only. For critical applications, please contact factory for certified drawings.

ORDERING INFORMATION

510	-	02	5	144	-	121
Model		Size	End Connections	Pressure Class		Body & Trim
510 - Integral Seat API 6D		01 1 in. (25 mm)	4 - RTJ	027/028 - ASME 150		Model 510/511 API 6D Non-Canadian Registration Number
511 - Removable Seat API 6D		02 2 in. (50 mm)	5 - Raised Face	072/074 - ASME 300		121 = CS x SS PC Buna Seals NACE CL. III B7 Bolting
523 - Integral Seat DPV		03 3 in. (80 mm)		144/148 - ASME 600		122 = CS x SS FKM Seals NACE CL. III B7 Bolting
524 - Removable Seat DPV		04 4 in. (100 mm)		216/222 - ASME 900		166 = CS x SS HNBR Seals NACE CL. II B7M Bolting
		06 6 in. (150 mm)		360 - ASME 1500		167 = LT CS x SS HNBR Seals NACE CL. II B7M Bolting
		08 8 in. (200 mm)		600 - ASME 2500		821 = CS x SS PC Buna Seals NACE CL. III B7 Bolting
		10 10 in. (250 mm)		500 - 5000LB WP		Model 510/511 API 6D With Canadian Registration Number
		12 12 in. (300 mm)				121C = CS x SS PC Buna Seals NACE CL. III B7 Bolting CRN
						122C = CS x SS FKM Seals NACE CL. III B7 Bolting CRN
						166C = CS x SS HNBR Seals NACE CL. II B7M Bolting CRN
						167C = LT CS x SS HNBR Seals NACE B7M Bolting CRN
						821C = CS x SS PC Buna Seals NACE CL. III B7 Bolting CRN
						Model 523/524 Drilling Production Valve
						133 = CS x SS FKM Seals NACE CL. III B7 Bolting

Example:

510-025144-121 = API 6D NON-CRN Swing Check, Full Opening, Integral Seat, 2 in. (50 mm), Raised Face Flanged Ends, ASME 600 (PN 100), CS Body x SS Trim, Peroxide Cured Buna Seals, NACE CL. III Bolting.

Please contact Cameron's Valves & Measurement group for current Terms and Conditions and Trademark information.

**VALVES & MEASUREMENT**

3250 Briarpark Drive, Suite 300
Houston, Texas 77042
USA Toll Free 800 323 9160

For the most current contact and location information go to: www.c-a-m.com/valvesandmeasurement